

# PUNCHBOWL

Packaging

**BAGASSE FIBRE  
PACKAGING**

## WHAT IS BAGASSE?



We use annually renewable plants such as sugarcane and bamboo in our bagasse blend.



The excess fibres from sugarcane processing are turned into pulp, mixed with bamboo fibres and then made into punnets, trays and other packaging items.



Traditionally this waste material would have been burned or buried but now it is a valuable resource as we move away from plastics.

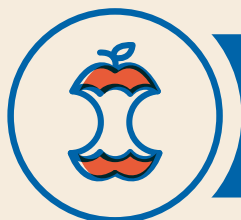
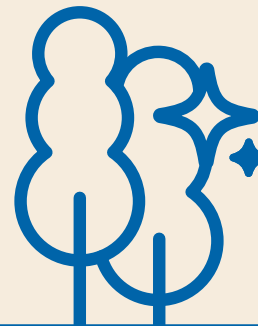


## HANDLES EXTREMES

**-40  
TO  
180  
DEGREES**

## LOW IMPACT

- No bleach or colour in our fibre products; there is some natural colour variation from time to time because this is a natural product.
- Unlike the trees used for wood pulp, the plants used in the production of bagasse are fast growing and easily harvested.



**Compostable in either industrial compost facilities or at home with your garden waste.**

# RETHINK

## Recycle • Reuse • Replace

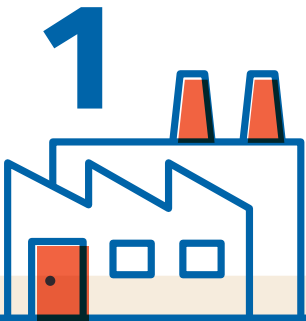
- We have had our bagasse tested for pulpability which is an important measure if you want to recycle it with cardboard. It passed easily. Hence we can claim "Recyclable and Compostable" on our packaging.



- Bagasse can be printed on, so you can add best before dates, marketing information or barcodes directly onto the packaging.



**PRODUCES HIGH QUALITY  
SMOOTH SURFACE FINISH**



We personally visit our supplier at least twice a year. We are a BRC compliant company and as such need our factories to meet the BRC requirements. We also have Chinese based agents who work on our behalf, regularly visiting the factories and checking the quality of our products before they leave the country.

**2**

Our products are designed in New Zealand to meet the needs of our customers. We work with Chinese suppliers who mould the products for us. The raw materials for making our bagasse blends are abundant in China.

## RIGHT FOR YOUR PRODUCT



fish



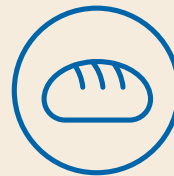
meat



powder



oils & fats



bakery



produce



non food

[punchbowlpackaging.co.nz](http://punchbowlpackaging.co.nz)

Version 1: Last Updated MAY24

Specifications, information and features are subject to change without notice. Copyright of Punchbowl Packaging, All rights reserved